



Decan Seating Solutions

TELESCOPIC BLEACHERS

INDEX

GOLD

Low back individual pvc seating	2
---------------------------------	---

SILVER

Continuous pvc seating	4
------------------------	---

COPPER

Elevated continuous pvc seating	6
---------------------------------	---

PLATINUM

Continuous wooden seating	8
---------------------------	---

PLATINUM ELEVATED

Elevated continuous wooden seating	10
------------------------------------	----

RHODIUM

Foldable seatback, Pvc seating, Manual folding	12
--	----

RUBY

Foldable seatback, Wooden seating	14
-----------------------------------	----

EMERALD

Foldable seatback, Upholstered seating	16
--	----

EMERALD PLUS

Foldable seatback, Upholstered seating, Automatic opening	18
---	----

DIAMOND

Foldable foot (manual) upholstered seating	20
--	----

DIAMOND PLUS

Foldable foot, Upholstered seating, Manual foot lifting and folding system	22
--	----

COMFORT FLEX

Flexible seating solution combining comfort, aesthetics and space utility	24
---	----

CUSTOMIZATION AND OPTIONS

FOLDING SYSTEMS	26
-----------------	----

FLOORING	28
----------	----

HANDRAILS AND "BUILT IN" SOLUTIONS	29
------------------------------------	----

STRUCTURE COLOUR, RISER FINISH AND SIDE & REAR CLOSURE	31
--	----

MARKING / STEP LIGHTING AND SEAT & FILE NUMBERING	32
---	----

HANDICAP SPACE SOLUTIONS	32
--------------------------	----



Decan Seating Solutions

Decan is a company specialized in the design, engineering and manufacturing of seating solutions where demands for quality and safety are key points. Our telescopic retractable bleachers and grandstands are designed by professional engineers with extensive experience, and the finished seating systems are following and exceeding requirements from European normative and other guidelines from relevant sources.

Our seating systems can be technically and aesthetically customized and adapted to each individual project, and have been installed and used with great success in a high number of projects in different parts of the world. Safe, practical and comfortable seating solutions can be provided for any type and any size of installation or venue; Sports halls and facilities, schools, gymnasiums, universities, conference halls, theatres, multipurpose rooms or entire multipurpose facilities etc.



GOLD



LOW BACK INDIVIDUAL PVC SEATING



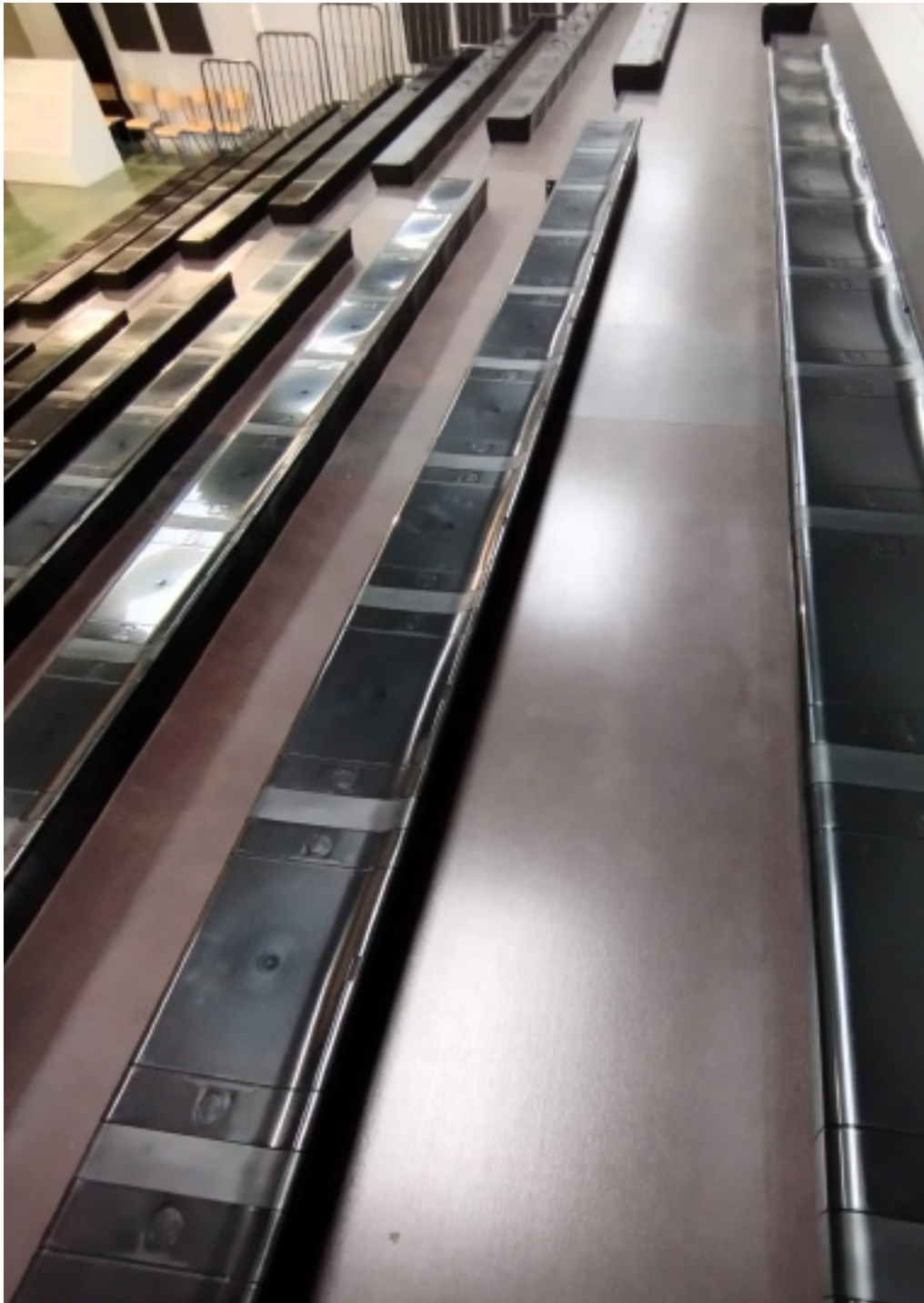
SILVER



CONTINUOUS PVC SEATING



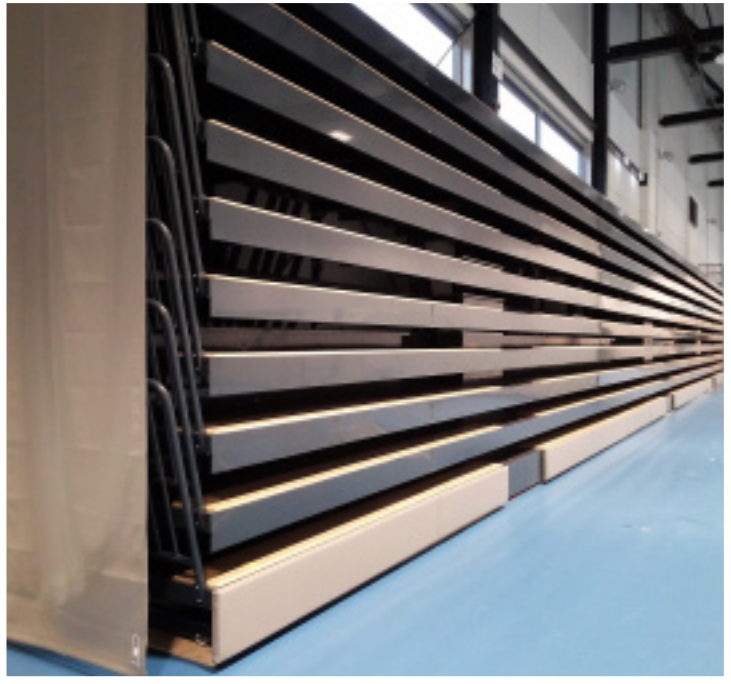
COPPER



ELEVATED CONTINUOUS PVC SEATING



PLATINUM



CONTINUOUS WOODEN SEATING



PLATINUM ELEVATED



ELEVATED CONTINUOUS WOODEN SEATING

HOME GUEST
14 08

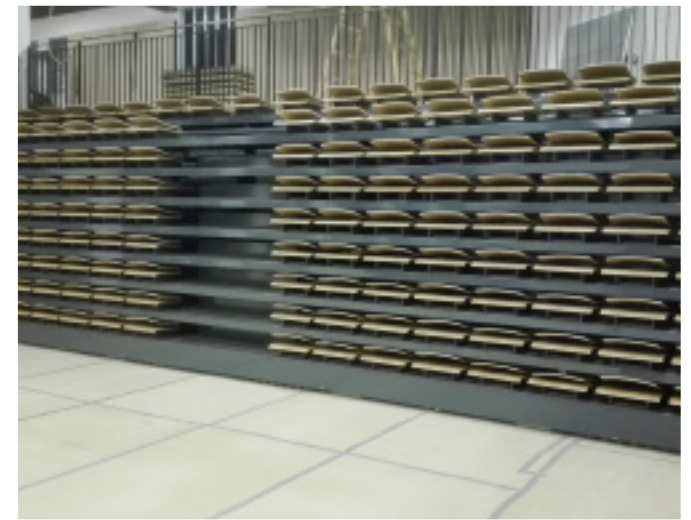
RHODIUM



FOLDABLE SEATBACK, PVC SEATING, MANUAL FOLDING



RUBY



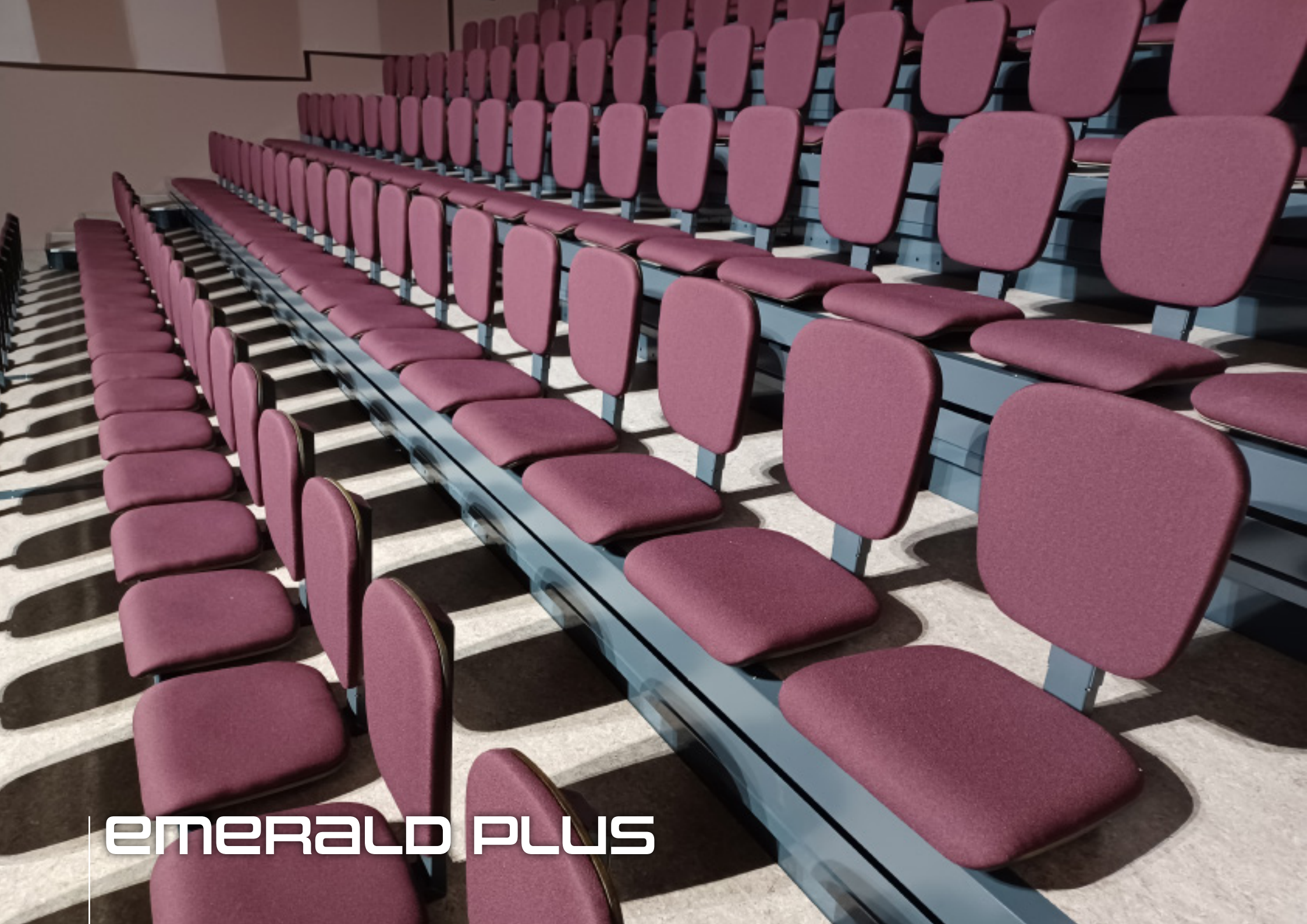
FOLDABLE SEATBACK, WOODEN SEATING



EMERALD



FOLDABLE SEATBACK, UPHOLSTERED SEATING,
MANUAL SEAT OPENING SYSTEM



EMERALD PLUS



FOLDABLE SEATBACK, UPHOLSTERED SEATING,
AUTOMATIC OPENING



DIAMOND



FOLDABLE FOOT, UPHOLSTERED SEATING. MANUAL FOOT FOLDING SYSTEM



DIAMOND PLUS

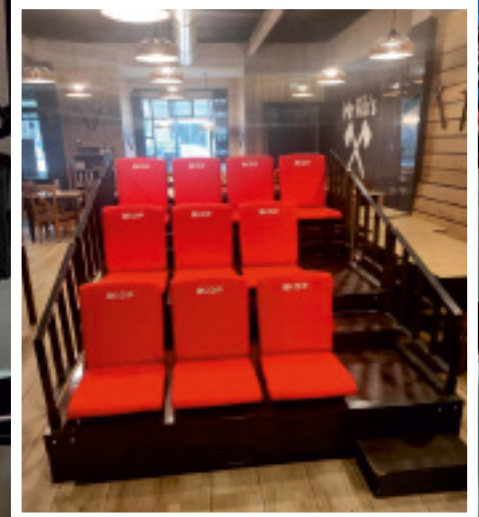
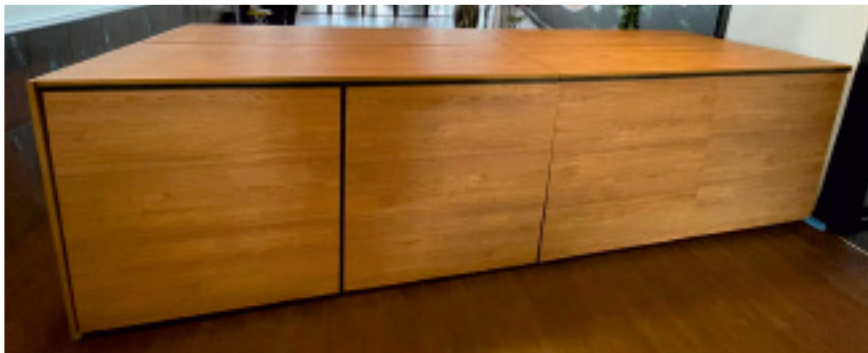


FOLDABLE FOOT, UPHOLSTERED SEATING. AUTOMATIC LIFTING AND FOLDING OF FOOT

TONY ROMAS



COMFORT FLEX



FLEXIBLE SEATING SOLUTION COMBINING COMFORT, AESTHETICS AND SPACE UTILITY:
When not in use, the telescopic bleacher is converted into a transportable, compact "Furniture Box" for storage and maximum space saving.
Available with various seat models.

CUSTOMIZATION AND OPTIONS

The telescopic bleachers from Decan are customized to each specific project with dimensions and capacity according to the need of the client. Number of rows, type of seats, finish etc. are adapted to the project requirements. There are a wide range of possibilities with respect to customization:

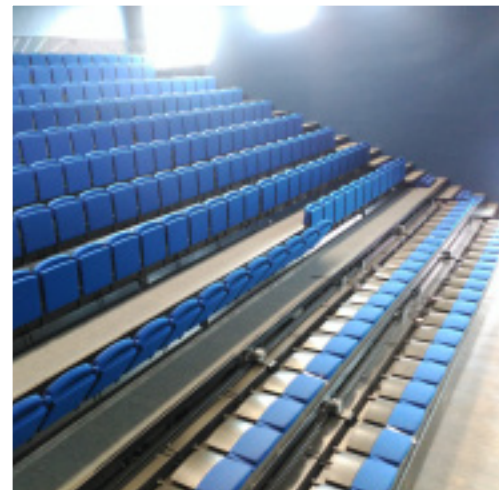
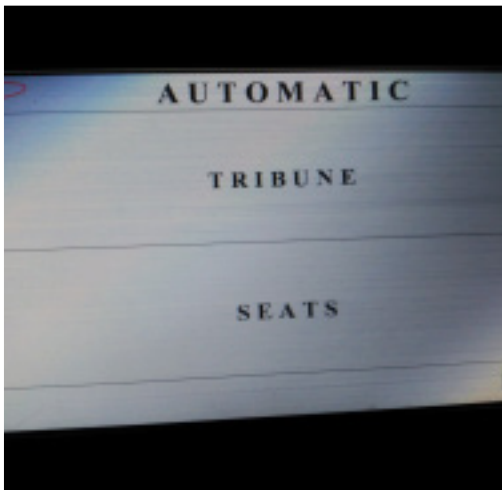
FOLDING SYSTEMS

Illustration of folding systems for telescopic bleachers equipped with seats with foldable foot:

MANUAL FOOT FOLDING SYSTEM



AUTOMATIC LIFTING AND FOLDING OF SEAT FOOT



BLEACHER OPERATION SYSTEM:

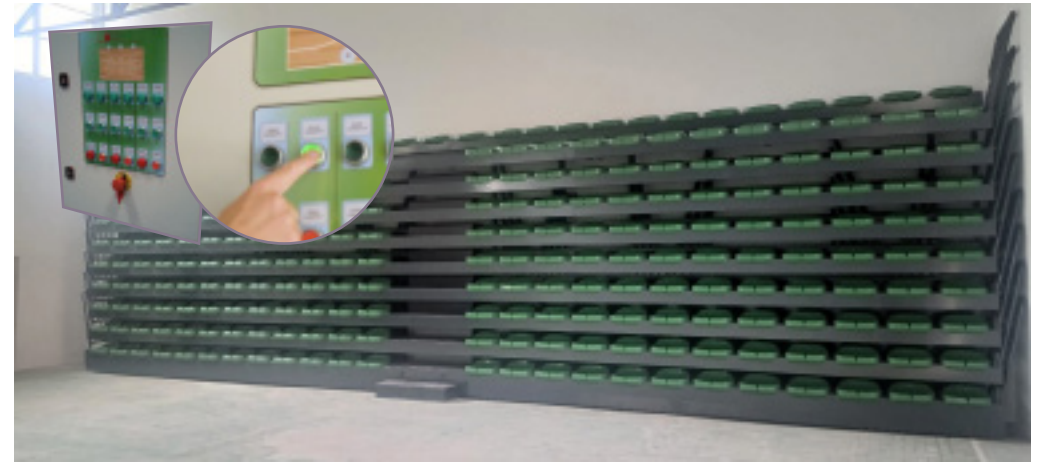
The telescopic bleachers from Decan are delivered with personalized solutions ranging from basic manual operating systems, via electric systems and to the highly sophisticated “intelligent” solutions:

- MANUAL OPERATION
- STANDARD MOTORIZED CONTROL AND OPERATION SYSTEM
- AUTOMATIC INTELLIGENT CONTROL AND OPERATION SYSTEM

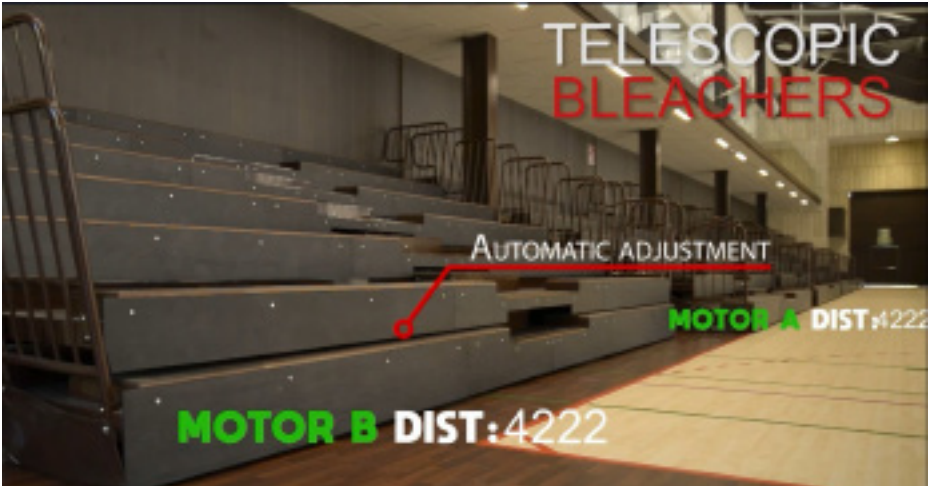
MANUAL OPERATION



STANDARD MOTORIZED CONTROL AND OPERATION SYSTEM

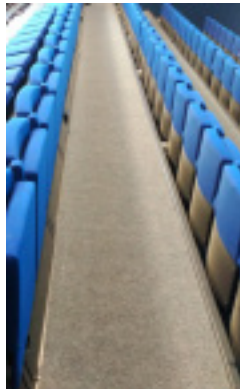


AUTOMATIC INTELLIGENT CONTROL AND OPERATION SYSTEM



FLOORING

- STANDARD WOODEN FINISH
- OPTIONS OF OTHER WOODEN FINISHES, LINOLEUM, CARPET, ETC



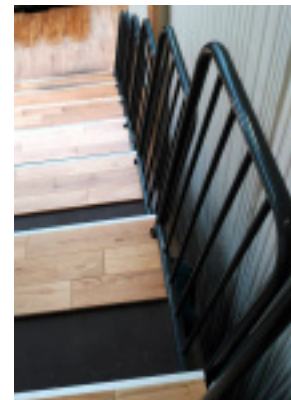
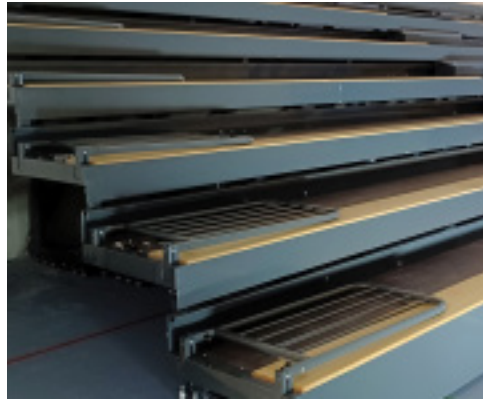
HANDRAILS AND "BUILT IN" SOLUTIONS

SIDE HANDRAILS - TYPE OPTIONS:

- INCLINED - TELESCOPIC
- STRAIGHT / DEMOUNTABLE
- FOLDABLE

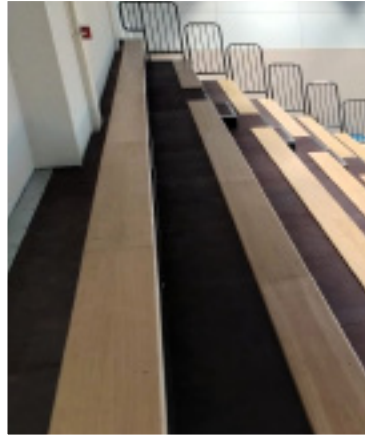
STYLE AND FINISH OPTIONS:

- STANDARD ROUND PROFILE
- FLAT OR SQUARE PROFILE
- DECORATIVE CLOSURE/INFILL: WOOD, POLYCARBONATE, METAL SHEETS.



OPTIONS OF

- FRONT ROW / FRONT HANDRAILS
- REAR HANDRAILS
- CUSTOMISED "BUILT IN" SOLUTION TOWARDS WALL AND COLUMNS



STRUCTURE COLOUR, RISER FINISH AND SIDE & REAR CLOSURE

OPTIONS OF:

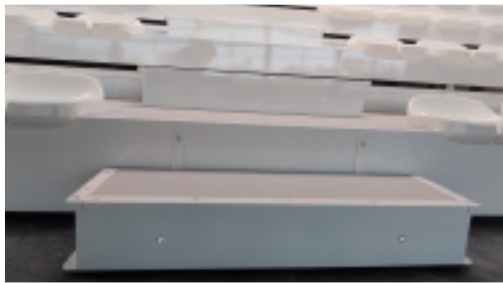
- STRUCTURE PAINT COLOUR
- FRONT COVER / RISER COVER MATERIAL AND COLOURS
- STRUCTURE SIDE AND REAR COVERS/CLOSURE
 - SIDE COVERS CAN BE:
 - MANUAL OR TELESCOPIC
 - STANDARD PVC, FABRIC, WOOD, STEEL, ALUMINIUM,...



MARKING / STEP LIGHTING AND SEAT & FILE NUMBERING

OPTIONS OF

- PHOTOLUMINECENT STEP MARKING
- LED STEP LIGHTS
- SEAT AND FILE NUMBERING



HANDICAP SPACE SOLUTIONS



Normative and certificates:

The seating solutions from Decan are subject to and follow European normative and regulations, and satisfy the specific and detailed requirements that apply to spectator facilities. Corresponding documentation and certificates for telescopic bleachers can be provided, including:

- **General certificate/declaration document** for the telescopic bleachers where it is confirmed that they are designed and fabricated in accordance with the specific European regulations which apply to spectator facilities: UNE-EN-13200-5: Spectator Facilities standard. Part 5: Telescopic bleachers*.
- **Structural analysis report** with calculations made according to the UNE-EN-13200-5.
- **Third party official report and certification:** Compliance to European norm UNE-EN 13200-5 is confirmed also via an independent European public laboratory/technological institute.
- **CE certificate and Declaration of performance document.**
- **Third party Factory Production Control Certificate** confirming that the factory production control is assessed to be in conformity with the applicable requirements and following the European standard EN 1090**.



*EN 13200-5 Spectator facilities – Part 5: Telescopic stands.

"This European standard specifies product characteristics for telescopic stands at permanent or temporary entertainment venues including sports stadiums, sport halls and indoor and outdoor facilities."

**EN 1090 Conformity assessment of load-bearing components:

"EN 1090-1 is a harmonized standard that specifies requirements for the execution of load-bearing components in steel or aluminium, requirements that must be met in order for the component to be in accordance with the EU's construction products directive, including requirements for CE marking."

Through this latter norm, production (including welds etc.) as well as material (including composition, quality, place of origin, etc.) is controlled at the class level required for the product being produced.



Decan Sports Equipment S.L.

Ctra. de Valencia Km 8,7, angular C/ Ruiseñor. 50410 Cuarte de Huerva (Zaragoza). España

Tel. (+34) 976 12 50 46 • info@decan.es

www.decan.es • www.decan-seatingsolutions.com